

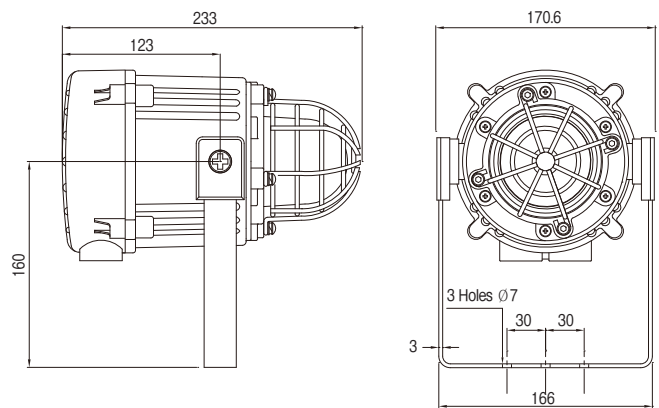
Non-Flame Proof Type Xenon Strobe Beacon

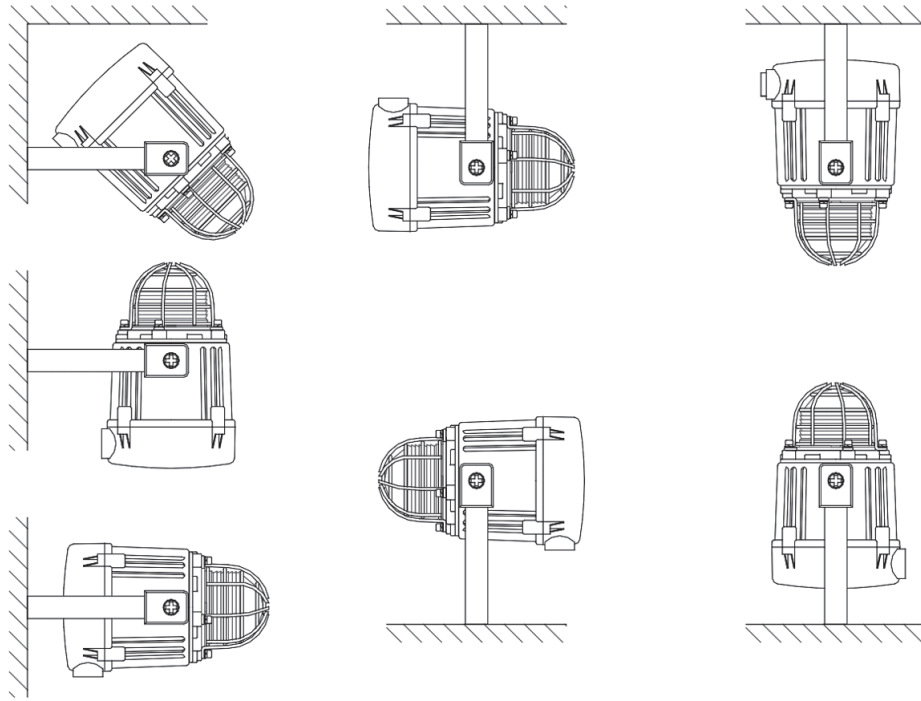
MB005

Dimension (Unit:mm)

Feature

- ▷ Automatic synchronised flash, or Flip-Flop alternating mode.
- ▷ Xenon tube mechanically secured against vibration.
- ▷ Continuously rated.
- ▷ Large termination area.
- ▷ Stainless steel fixings.
- ▷ Ratchet adjustable stainless steel U bracket for 360° positioning.
- ▷ Duplicate cable terminations (in & out for daisy-chain installations).
- ▷ Tropicalised as standard.





Specification

NON-FLAME PROOF TYPE XENON STROBE BEACON	
Energy	5 Joules (5Ws)
Flash rate	1Hz (60 fpm)
Peak candela	500,000 cd – calculated from energy (J)
Effective intensity cd	250 cd – calculated from energy (J)
Peak candela	16,428 cd* – measured ref. to I.E.S.
Effective intensity cd	51 cd* – measured ref. to I.E.S.
Lens colors	Amber, Blue, Clear, Green, Red & Yellow
Voltages DC	12VDC; 24VDC; 48VDC
Voltages AC	115VAC; 230VAC
Ingress protection	IP66 & IP67 (Third party tested)
Housing material	High impact UL94 V0 & 5VA FR ABS
Color	Grey (RAL7038)
Cable entries	2 x M20 supplied with 1 blanking plug
Lens material	Borosilicate glass dome with PC prismatic lens cover.
Guard	Stainless Steel dome guard as standard
Terminals	0.5 to 4.0mm ² cables.
Operating temp	-25°C to +55°C
Storage temp	-40°C to +70°C
Relative humidity	90% at 20°C
Weight	1.48kg
* Candela measurements representative of performance with clear lens at optimum voltage.	

Part codes

VERSION	PART CODE
12V dc	MB005DC12G-[xx]
24V dc	MB005DC24G-[xx]
48V dc	MB005DC48G-[xx]
115V ac	MB005AC115G-[xx]
230V ac	MB005AC230G-[xx]
[xx] = Lens Color	AM: Amber, BL: Blue, CL: Clear, GN: Green, RD: Red, YW: Yellow
Also available as the MCA112-05 combined alarm sounder and Xenon beacon and the MCL15-05 15W PA Loudspeaker with Xenon beacon.	

Current consumption

Version	Voltage	(Current)
12V dc	10-14V dc	(750mA)
24V dc	20-28V dc	(270mA)
48V dc	42-54V dc	(180mA)
115V ac 50Hz/60Hz	±10%	(140mA)
230V ac 50Hz/60Hz	±10%	(55mA)